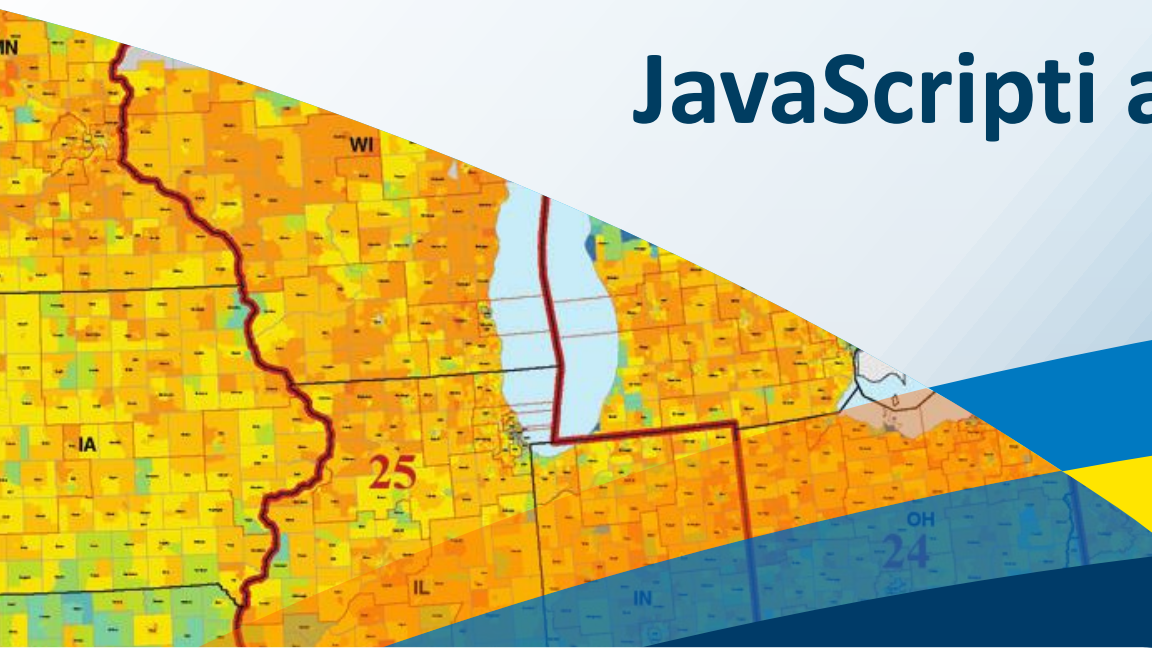


Interaktiivsed kaardid JavaScripti abil

Kristel Meikas, AlphaGIS



Kava

- JavaScripti API tutvustus
- Arendusvahendid
- Valmiskomponendid ja moodulid
- Demo

ArcGIS API JavaScriptile



Uusim versioon – 3.4 (märts 2013)

- Kasutab Dojo 1.8.3 raamistikku
- Toetab HTML5 ja CSS3
- Kasutatav eesti keeles
- API kättesaadavus ja kasutamine
 - Kesksest serverist kasutamine - *Content Delivery Network*
 - Allalaadimine oma serverisse
- Saadaval kompaktversioon mobiilsetele seadmetele
 - Android 2.2+, iOS 3+, Blackberry 6+ tugi

<http://developers.arcgis.com/en/javascript>

API kasutusvõimalused

- Interaktiivsed kaardid
- ArcGIS Online kaardid
- Valmiskomponendid
- Eelloodud moodulid (*widgets*)
- Näidised, õpetused

Toetatud brauserid/süsteemid

 Chrome

 Firefox

 Safari 3+

 Internet Explorer 7-10

Mobiilis/tahvelarvutis:

- Android 2.2+ (3.x+ „näpistamisliigutuste“ jaoks)
- iOS 3+
- Blackberry 6+

Arenduskeskkond

- **Veebiserver**
 - IIS
 - Apache
- **Arendusvahendid (*IDE*)**
 - Meelepärane tekstiredaktor
 - Visual Studio
 - Aptana Studio
- **Tööriistad**
 - Abiplugin (*code assist*)
 - Visual Studio 2010 või 2012 RC
 - Aptana Studio 3
 - Silumistööriistad brauserites (*debugging tools*)


```
function init() {
  var initExtent = new esri.geometry.Extent({"xmin":-122.46,"ymin":37.73,"xmax":-122.36,"ymax":37.77,"spatialReference":{"wkid":4326}});
  map = new esri.Ma
```

IdentityManagerBase	ArcGIS JSAPI 2.7
InfoTemplate	ArcGIS JSAPI 2.7
InfoWindowBase	ArcGIS JSAPI 2.7
M	index.htm
Map	ArcGIS JSAPI 2.7
OperationBase	ArcGIS JSAPI 2.7
ServerInfo	ArcGIS JSAPI 2.7
SnappingManager	ArcGIS JSAPI 2.7

Map(divId: String, options: Object) :
void

Creates a new map inside of the given HTML container, which is often a DIV element. The size of the map is the size of the container. The Map constructor can also include optional parameters. The optional parameters can be included in any order.

The screenshot shows a web browser's developer console with the following components:

- Script Panel:** Displays the code for a function named `render` in `del-linkrolls.js`. The function takes `o` and `posts` as arguments. It initializes `out` as an empty array and defines a `w` function to push elements into `out`. It checks if `o.icon` is true and sets it to 'm'. It then iterates over `this.defaults`, applying default values to `o` if they are undefined. Line 59, `o[k] = this.defaults[k];`, is highlighted as the current execution point.
- Watch Panel:** Shows the execution context for the function. The `this` object is an `Object` with `defaults` and `icons` properties. The `o` object is also an `Object` with `user` set to "firebugnews", `BASE_URL` set to "http://www.delicious.com", and `STATIC_URL` set to "http://1.yimg.com/hr".
- Stack Panel:** Shows the call stack with the current function call at line 10.
- Bottom Status Bar:** Displays the message "Transferring data from feeds.delicious.com..."

Abiks arendamisel

- esriurl.com/js
 - developers.arcgis.com/en/javascript
 - developers.arcgis.com/en/javascript/sandbox/sandbox.html
- jsfiddle.net
- gis.stackexchange.com
- stackoverflow.com
- caniuse.com



Get Started

Work through a tutorial to build your first web application using the ArcGIS API for JavaScript.

Let's Go



Get Help

Resources ranging from learning JavaScript to places to ask targeted ArcGIS API for JavaScript questions.

Engage



HTML5 and CSS3

Various HTML5 components are integrated in the API and we provide samples for others.

Develop It



Tons of Samples

Dive into a huge collection of samples that demonstrate functionality included with the API.

Explore



Cloud Friendly

Use ArcGIS.com or your own on-premises cloud. The API provides tools to make working with both simple.

Choose



Browser Support

Chrome, Safari, Firefox and Internet Explorer, as well as mobile browsers, just work.

Learn More



Bundled Widgets

Widgets are included to add commonly required functionality to any app and all are accessible with a couple of lines of code.

Re-Use



ArcGIS Integration

Easily use services from ArcGIS Server or ArcGIS.com.

Consume



Any Screen

Phone or a 27" monitor? Mobile targeted samples run everywhere and more responsive design samples are coming.

Respond



Templates

Application templates for common workflows. We do 80% of the work for you.

Browse



Any Data Source

From CSV, KML, GeoRSS or custom tile sets, we've got you covered.

Add Data



Frameworks

Use Dojo, as we do, or take your pick. We provide samples showing integration with popular frameworks, such as jQuery.

Combine

Eelloodud moodulid

- **Geokodeerimine**
- **Teekonna planeerimine**
- **Printimine**
- **Kasutajahaldus**
- **Legend / määtkava**
- **Määtmine**
- **Aluskaartide valik**
- **Veel mooduleid: esriurl.com/jswidgets**



Demo

Täna tähelepanu eest!

AlphaGIS

e-post: kristel.meikas@alphagis.ee

<http://www.alphagis.ee>

[facebook.com/AlphaGIS](https://www.facebook.com/AlphaGIS)



esri

